



Department of Finance
DAVE IRISH, CPA, DIRECTOR OF FINANCE
POOLED INVESTMENT FUND

Monthly Review — December 2009

PORTFOLIO COMPLIANCE

Based on the Director of Finance Review Group Month-End Report, the entire portfolio was in *full compliance* with the Sacramento County Annual Investment Policy for the Pooled Investment Fund for Calendar Year 2009 and California Government Code.¹

PORTFOLIO STATISTICS

Portfolio's Month-End Balance	\$2,808,095,989
Earned Income Yield for the Month	0.947%
Weighted Average Maturity (Days)	198
Estimated Duration (Years)	0.533
Historical Book Value	\$2,801,097,592
Month-End Market Value	\$2,814,641,531
Percent of Market to Book Value	100.48%

External third party Investment Manager(s) at month end:

Blackrock Liquidity Institutional Fed Fund	\$89,000,000
Federated Government Obligations Fund	\$47,000,000
State Treasurer's Office (LAIF)	\$40,000,000

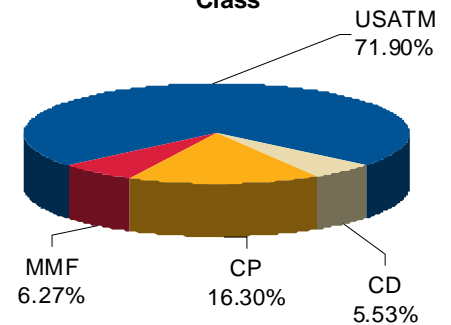
PORTFOLIO STRUCTURE²

Investment Description	Portfolio at Cost	Yield at Month End
US Agency, Treasury & Municipal Notes (USATM):		
<i>US Agency Notes</i>	68.22%	1.165%
<i>US Treasury Notes</i>	0.00%	0.000%
<i>Municipal Notes</i>	3.68%	1.358%
Total USATM	71.90%	1.175%
Commercial Paper (CP)	16.30%	0.129%
Certificates of Deposit (CD)	5.53%	0.585%
LAIF/Money Market Funds (MMF)	6.27%	0.262%
Repurchase Agreements (REPO)	0.00%	0.000%

Investment Objectives

- **Safety of Principal**
- **Liquidity**
- **Public Trust**
- **Maximum Rate of Return**

Percentage Portfolio Structure by Asset Class



**US Agency Notes Breakdown
Percent of Portfolio at Cost²**

FFCB Notes/Discount Notes	4.11%
FHLB Notes/Discount Notes	16.05%
FNMA Notes/Discount Notes	19.93%
FHLMC Notes/Discount Notes	28.13%
Total US Agency Notes	68.22%

¹ This monthly review complies with all of the elements required by California Government Code §53646(b), with the exception of a detailed listing of each investment. A complete copy of the *Quarterly Pooled Investment Fund Report*, including a detailed listing of each investment, is available on the Department of Finance, Investment Division Web page at <http://www.finance.saccounty.net/Investments/RptQuarterly.asp>.

² Percentages may not add up to totals due to rounding error

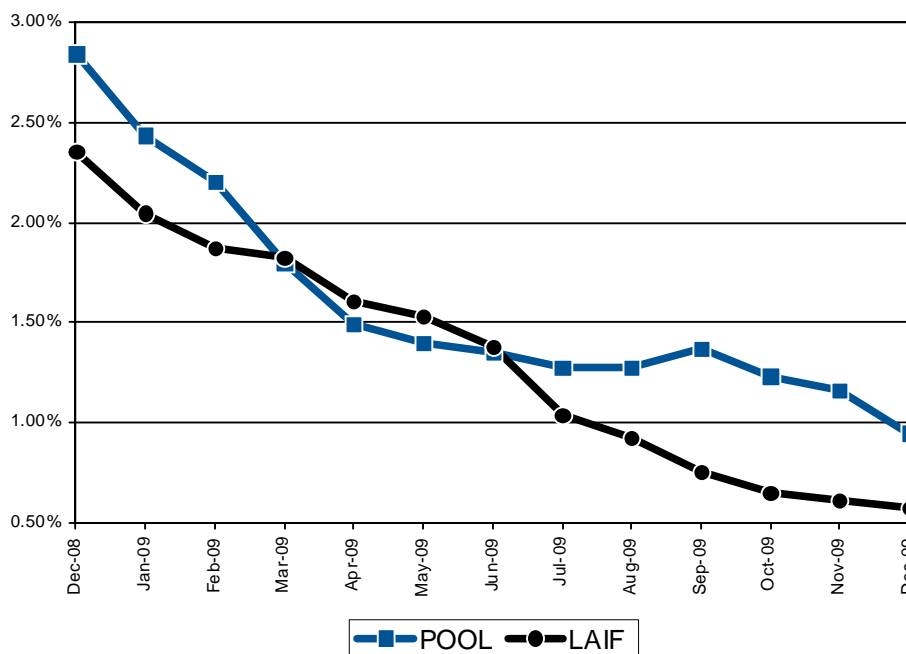
YIELD HISTORY

The earned interest yield history represents gross yields; **costs have not been deducted**. The estimated investment management costs in the prior year were approximately 10 basis points or 0.10%. The quarterly apportionment of earnings to participating funds will be made on a **cash basis** (as opposed to an accrual basis) for the first three quarters of the fiscal year. Earnings to participating funds will be annualized over the fiscal year based on a fund's cumulative average daily cash balance at each quarter end and fiscal year end. At fiscal year end (fourth quarter), the earnings of the pool will be converted to an accrual basis for the fourth quarter earnings' allocation.

YIELD TRENDS³

Earned Interest Yield Over Last 12 Months

Earned Income Yield History		
MONTH	POOL	LAIF
Dec-08	2.85%	2.35%
Jan-09	2.44%	2.05%
Feb-09	2.20%	1.87%
Mar-09	1.80%	1.82%
Apr-09	1.49%	1.61%
May-09	1.40%	1.53%
Jun-09	1.35%	1.38%
Jul-09	1.27%	1.04%
Aug-09	1.27%	0.93%
Sep-09	1.37%	0.75%
Oct-09	1.23%	0.65%
Nov-09	1.16%	0.61%
Dec-09	0.95%	0.57%



CASH FLOW PROJECTION

The Pooled Investment Fund cash requirements are based on a 14-month historical cash flow model. The model has been adjusted for expected non-reoccurring participant liquidity needs. This projection, updated on January 13, 2010, is sufficient to meet cash flow expenditures for the next six months.

Month	Beginning Bank Balance	Receipts & Maturities	Disbursements	Difference	Less Investments Beyond 1 year	Funds Available to Invest for Future Cash Flow Needs ⁴
<i>Dollar amounts represented in millions</i>						
Jan	5.0	\$1,041.6	\$612.5	\$429.1	\$20.0	\$409.1
Feb	5.0	\$829.3	\$658.6	\$170.7	\$20.0	\$150.7
Mar	5.0	\$1,290.1	\$775.4	\$514.7	\$20.0	\$494.7
Apr	5.0	\$1,067.5	\$686.0	\$381.5	\$20.0	\$361.5
May	5.0	\$737.4	\$717.0	\$20.4	\$20.0	\$0.4
Jun	5.0	\$455.4	\$821.6	(\$366.2)	\$20.0	(\$386.2)

If you have any questions about the Pooled Investment Fund, please call Acting Chief Investment Officer Bernard Santo Domingo at (916) 874-7320.

³ The earned income yield is the total net earnings divided by the average daily portfolio balance multiplied by 365 and then divided by the actual number of days in the month. The reported yield fluctuates based upon the number of days in the month, thus resulting in the anomaly of higher yields being reported for months with fewer days. February's yield is a prime example of such an anomaly.

⁴ Any excess net cash flow amounts in this column will be used to fund the negative cash flow positions in later months.